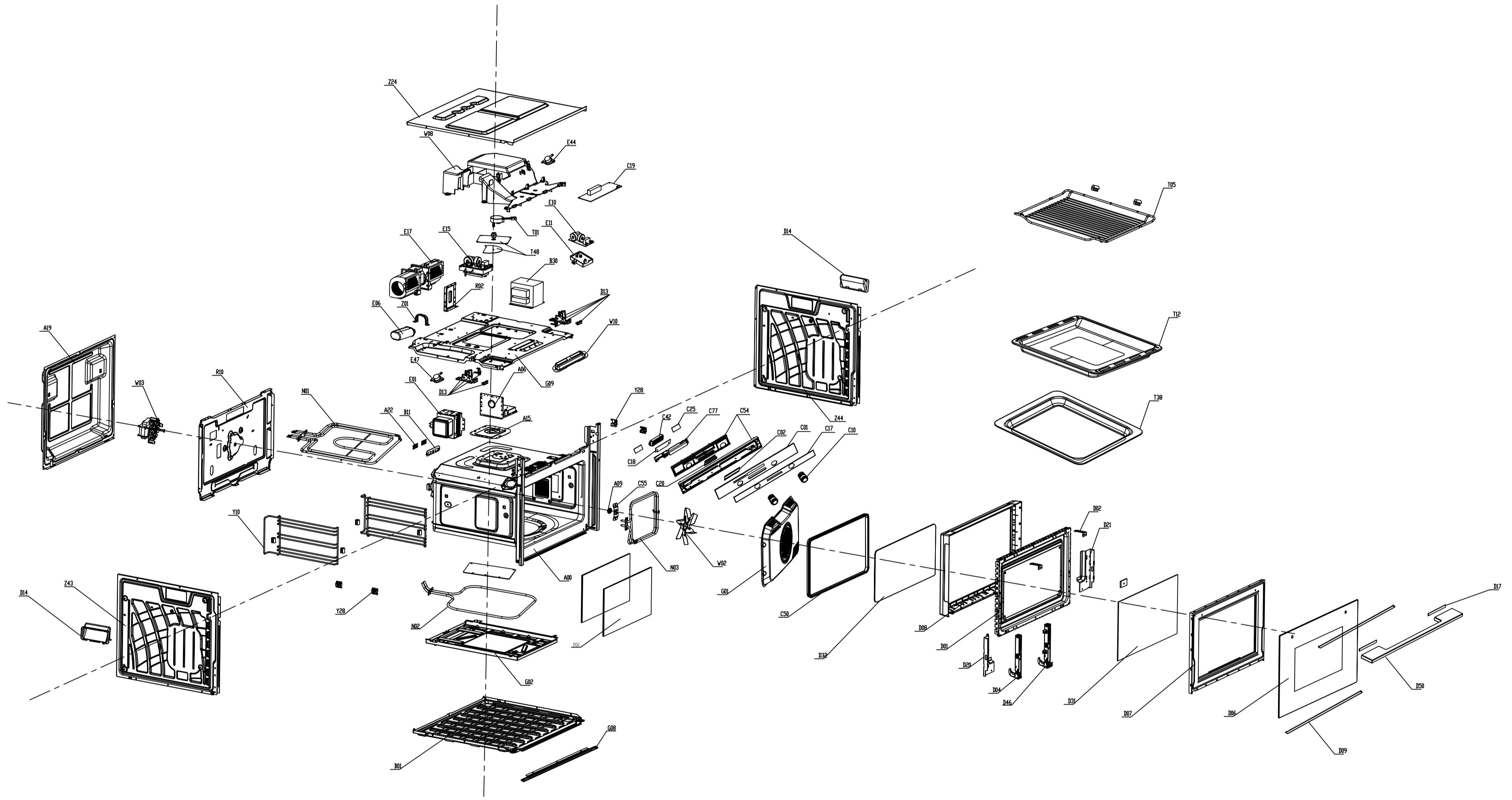


A  
B  
C  
D  
E  
F  
G  
H  
J  
K  
L  
M



|         |            |                               |      |
|---------|------------|-------------------------------|------|
| Z44     | 外罩         | Cover                         | 1    |
| Z43     | 外罩         | Cover                         | 1    |
| Z36     | 灯玻璃        | Lamp Glass                    | 1    |
| Z24     | 外罩         | Cover                         | 1    |
| Z01     | 电容器夹       | Capacitor Holder              | 1    |
| Y28     | 支撑         | Supportor                     | 4    |
| W10     | 排气罩        | Guide Air Cover               | 1    |
| G09     | 导风底板       | Air Duct Baseplate            | 1    |
| W08     | 塑料导风件      | Wind Guide                    | 1    |
| W03     | 风机组件       | Fan Assembly                  | 1    |
| W02     | 金属扇叶       | Metal Fan                     | 1    |
| T48     | 搅拌片组件      | Stirrer Fan Assembly          | 1    |
| T38     | 玻璃盘        | Glass Turntable               | 1    |
| T12     | 烤盘         | Grill Tray                    | 1    |
| T05     | 烧烤架        | Rack                          | 1    |
| T01     | 同步电机       | Synchronous Motor             | 1    |
| R10     | 隔热板        | Heat Insulator                | 1    |
| R02     | 固定支架       | Fixing Bracket                | 2    |
| N03     | 金属发热管      | Heater                        | 1    |
| N02     | 金属发热管      | Heater                        | 1    |
| N01     | 金属发热管      | Heater                        | 1    |
| L05     | 线束         | Main Wire Harness             | 1    |
| G08     | 固定支架       | FIXING BRKT                   | 1    |
| G01     | 发热管罩       | Heater Cover                  | 1    |
| E47     | 突跳式温控器     | Thermostat                    | 1    |
| E44     | 突跳式温控器     | Thermostat                    | 1    |
| E28     | 保险管        | Fuse                          | 1    |
| E26     | 传感器组件      | Sensor Assembly               | 1    |
| E17     | 罩极电机       | Brushless DC Motor            | 1    |
| E16     | 电源线        | Power Cord                    | 1    |
| E11     | 滤波板安装板     | Filter Mounting Plate         | 1    |
| E10     | 滤波板组件      | Noise Fliter Assembly         | 1    |
| E07     | 高压二极管      | H. V. Diode                   | 1    |
| E06     | 高压电容       | H. V. Capacitor               | 1    |
| E05     | 高压变压器      | H. V. Transformer             | 1    |
| E01     | 磁控管        | Magnetron                     | 1    |
| D50     | 门拉手(部装)    | Door Handle                   | 1    |
| D17     | 拉手垫片       | Handle Pad                    | 2    |
| D14     | 其他塑料件      | Other Plastic Parts           | 2    |
| D46     | 铰链组件       | Hinge Assembly                | 1    |
| D32     | 隔热玻璃       | Heat Insulation Glass         | 1    |
| D13     | 联锁组件       | Interlock Assembly            | 1    |
| D13     | 联锁组件       | Interlock Assembly            | 1    |
| D09     | 金属控制面板贴片   | C/Panel Decoration            | 2    |
| D08     | 门封         | Door Gasket                   | 1    |
| D06+D07 | 门面滴胶组件     | Door Drop Glue Assembly       | 1    |
| D04     | 铰链组件       | Hinge Assembly                | 1    |
| D02     | 金属门钩       | Latch                         | 2    |
| D01+D31 | 门体滴胶组件     | Door Frame Drop Glue Assembly | 1    |
| D00     | 炉门组件       | ASS'Y DOOR                    | 1    |
| C77     | MI组件       | MI Assembly                   | 1    |
| C55     | 金属保护罩      | Metal Cover                   | 1    |
| C54     | 触摸显示屏组件    | Touch Screen Assembly         | 1    |
| C50     | 密封圈        | Sealing Ring                  | 1    |
| C42     | 按钮座        | Button Holder                 | 1    |
| C25     | MI组件       | MI Assembly                   | 2    |
| C20     | 按钮         | Button                        | 6    |
| C19     | MI组件       | MI Assembly                   | 1    |
| C18     | MI组件       | MI Assembly                   | 1    |
| C17     | 美的版控制面板壳丝印 | Control Panel Decoration      | 1    |
| C10     | 旋钮组件       | Knob Assembly                 | 2    |
| C02     | 导光板贴片      | Light Guide Decoration        | 1    |
| C01     | 客版控制面板玻璃丝印 | C/Panel Glass                 | 1    |
| C00     | 控制盒组件      | ASS'Y CONTROL                 | 1    |
| B11     | 发热管支架      | Heater Bracket                | 1    |
| B01     | 底板         | BASE PLATE                    | 1    |
| A22     | 弹片         | Spring                        | 2    |
| A19     | 后板         | Back Plate                    | 1    |
| A13     | 温控器支架      | Thermostat Bracket            | 1    |
| A09     | 密封圈        | SEALING RING                  | 1    |
| A06     | 波导盖        | Wave Guide Cover              | 1    |
| A01     | 防溅板        | Splash Cover                  | 1    |
| A00     | 腔体组件       | Cavity Assembly               | 1    |
| No.     | 物料名称       | Part Name                     | Qty. |

TV950EM8C-T00E